



国際医療福祉大学

Curriculum and Admission of School of Medicine, IUHW

Diploma Policy

1. Students provide patient-centered medical care with **medical professionalism** based on a sense of mission and high ethical standards.
2. Students have a sufficiently broad knowledge and **advanced communication skills to deal with globalization in the field of medicine** and are able to perform in overseas medical facilities.
3. Students provide high-caliber medical care based on scientific thinking with having developed open-minded refinement and a spirit of tolerance and master the **sciences and arts required of practitioners in the fields of medicine and healthcare**.
4. Students acquire **the ability to cooperate and collaborate with people in a wide range of professions working at medical facilities**, knowledge concerning accountability structures and the roles of each profession, as well as the ability to play core roles in medical teams in the future.



The School of Medicine, which aims to train physicians with advanced comprehensive medical skills, has welcomed its 5th students!



国際医療福祉大学

Location of School of Medicine at Narita Campus, IUHW



国際医療福祉大学

Features of School of Medicine

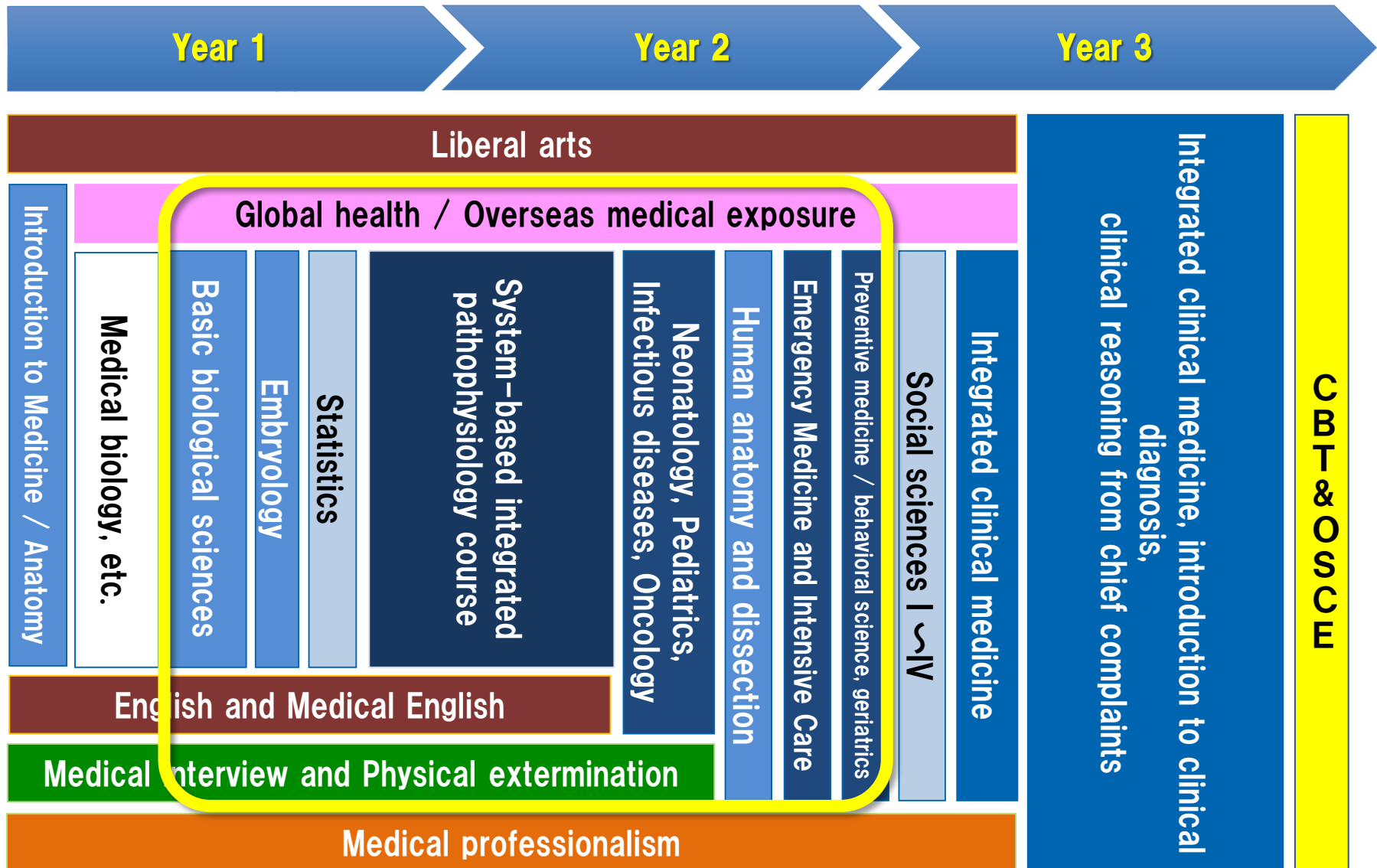
“Innovative medical education”

for training physicians who can play a active role on the global stage

1. Basic and clinical medicines are taught in English
2. 1 in 7 students is an international student, and overseas clinical training more than 4 weeks is conducted in Year 6
3. Excellent student life and study support services, and full-time medical education staff
4. Excellent practical education using plenty of the latest facilities and equipment
5. Learn "team medicine and team care" with other department's students
6. Generous tuition support to open the door to a wide range of students
7. Full preparation by faculty and experts having lots of international experience.
8. Integrated education with a graduate school doing cutting-edge medical research



All classes are conducted in **English** from the 2nd semester of Year 1 to the end of Year 2



All Classes from Year 3 are conducted in Japanese

Year 1

Year 2

Year 3

Because...

- International students need to master Japanese
- Students take CBT (written test) & OSCE (practical skills test) which are equivalent to a provisional driving license, in Japanese

Introduction to Medicine / Anatomy

Social sciences I ~IV

Integrated clinical medicine

Integrated clinical medicine, introduction to clinical
diagnosis,
clinical reasoning from chief complaints

CBT & OSCE

Medical professionalism



国際医療福祉大学

Curriculum between Year 4 and Year 6

Year 4

Year 5

Year 6

In Year 6, clinical elective clerkship and preparation for the national exam

- In the 1st semester, students choose the place of training from university hospitals and medical facilities in Asia, Europe and America
- Clinical skills and practical examinations in English
- From the 2nd semester, students prepare for the graduation exam and the national exam

Clinical elective clerkship / Clinical clerkship overseas

Post CC OSCE / International clinical skills evaluation test

Comprehensive review

Graduation examination

National examination for medical practitioner



TOEFL score of the 1st batch of students at the time of admission

	Section1 Listening	Section2 Grammar	Section3 Reading	Total
Upper- intermediate level	54	53	56	543
<u>All students</u>	<u>51</u>	<u>52</u>	<u>53</u>	<u>519</u>
Japanese students	50	51	53	509
International students	58	58	58	578



TOEFL score of the 1st batch of students at the end of Year 1

	Section1 Listening	Section2 Grammar	Section3 Reading	Total
Upper- intermediate level	54	53	56	543
<u>All students</u>	<u>55</u> (+4)	<u>54</u> (+2)	<u>57</u> (+4)	<u>551</u> (+32)
Japanese students	54 (+4)	53 (+2)	56 (+3)	543(+34)
International students	61 (+3)	58 (+0)	61 (+3)	603 (+25)



Medical education simulation center

Site: 5,338m²,
One of the biggest in the world.



Reflection on learning with recorded procedures and interactions using a simulator controlled and recorded by a computer



Overseas Network of IUHW

In Year 6, students take part in overseas clinical clerkship in our affiliated university and institution.

Vietnam

Hanoi Medical University
University of Medicine and
Pharmacy, Ho Chi Minh City
Cho Ray Hospital
Hue University of Medicine and
Pharmacy

China

China Rehabilitation Research
Center
China-Japan Friendship
Hospital

Indonesia

University of Udayana

Mongolia

Mongolian National University
of Medical Sciences

Poland

Wroclaw Medical University

Lithuania

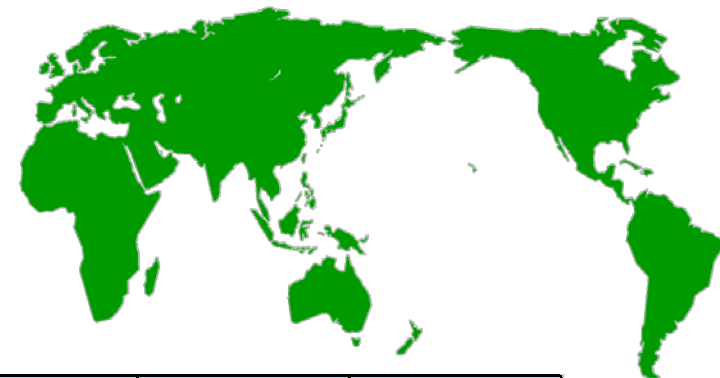
Lithuanian University of Health
Sciences

Hungary

Semmelweis University



International Students



99 international students from 12 countries and regions

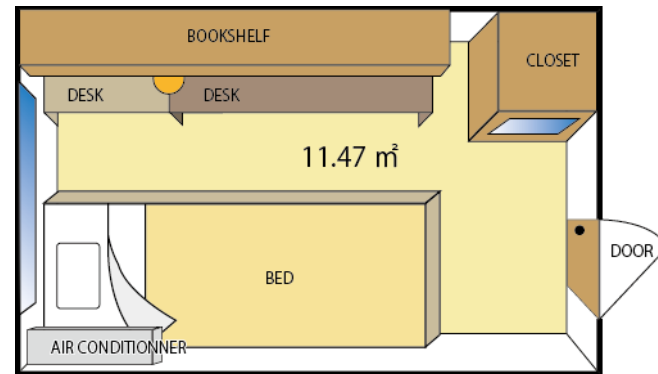
Country and Region	2017	2018	2019	2020	2021	Total
United States	1	—	—	—	—	1
Canada	—	—	—	—	1	1
Malaysia	—	1	—	—	1	2
Indonesia	2	1	2	2	1	8
South Korea	3	1	2	1	2	9
Vietnam	6	7	7	5	2	27
China	1	2	2	1	2	8
Myanmar	3	3	3	5	4	18
Cambodia	1	2	1	3	3	10
Taiwan	1	—	—	1	—	2
Mongolia	2	2	3	2	3	12
Laos	—	1	—	—	—	1
Total	20	20	20	20	19	99



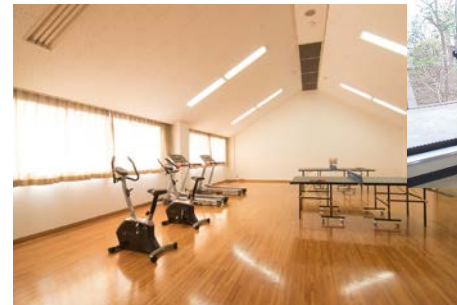
Narita International House



- 15 min. to campus by bus
- 20 min. to campus by bicycle



- 5 story building, 216 rooms (all single rooms)
- Dorm manager lives in the dorm
- Floors are separated by gender (with security systems)
- Breakfast and dinner are served
- All international students can live in 6 years.



Recreational Room



Kitchen Area

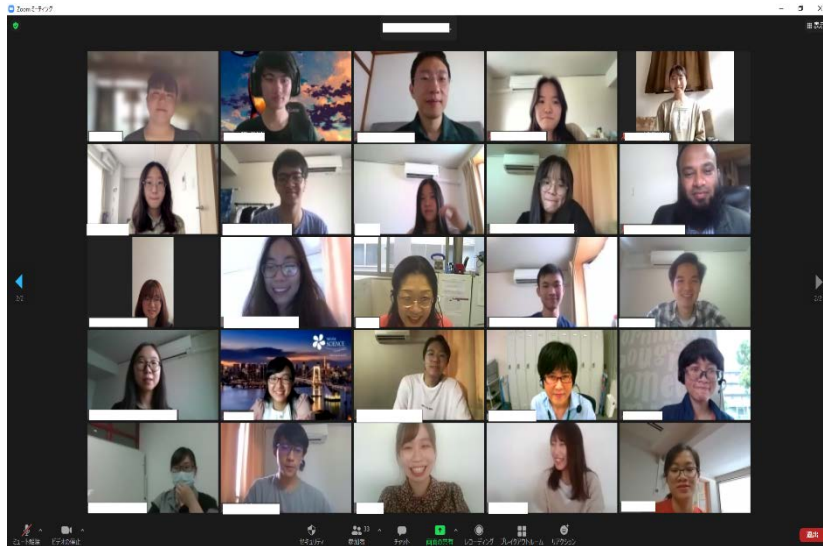


Narita International Center (NIC)

- Student support
- Planning events and activities
- Visa support



International Center



Welcome Party by Zoom



Natural Disaster Prevention Seminar by Narita City





School of Medicine, IUHW

Admissions

Guideline



Overview of the Special Entrance Exam

1. Enrollment Capacity, Exam Date and Venue

Enrollment capacity

International Student: 20

Returnee and Student from International School : A few students

Application Periods


1st Round: From 11th Aug. 2021 to 24th Aug. 2021

2nd Round: From 1st Nov. 2021 to 15th Nov. 2021

Exam dates

1st Round: **1st phase** 7th Sep. 2021, **2nd phase** 18th Sep. 2021

2nd Round: **1st phase** 27th Nov. 2021, **2nd phase** 11th Dec. 2021

 You can apply for 2nd round even if you do not pass the 1st round.

Venue: Tokyo for 1st and 2nd phases

Overview of the Special Entrance Exam

2. Subjects / Exam Length / Allotments

1st phase screening

English 50 min • 200 score, **Math** 80 min • 200 score

Science (Select two subjects from Physics, Chemistry, Biology)

80 min • 100 score × 2

Essay 60 min • Graded evaluation

⚠ Language of questions and answers is English.

International students can take the exam in Japanese.

2nd phase screening

Individual interviews About 30 min × 2 • Graded evaluation

⚠ Two interviews are conducted in English.

International students can take two interviews in Japanese.



Overview of the Special Entrance Exam

1. Qualifications (outline)

International Student

Applicants must satisfy all the following requirements.

- (1) Have neither Japanese nationality nor permanent residential status in Japan
- (2) Have completed 12 years of school education outside Japan
- (3) Be able to obtain “*Ryugaku* (Student)” visa by the enrollment
- (4) Have an adequate command of English skill

* Preferably over TOEFL iBT 80 or IELTS 6.0



Overview of the Special Entrance Exam

2. Qualifications (outline)

Returnee and Student from International School

Applicants, having Japanese nationality or foreign nationals with permanent residential status in Japan, must have an eligibility for admission to bachelor's degree program of universities in Japan and satisfy one of the following requirements.

- (1) Have completed 11th & 12th grades of an overseas high school
- (2) Have spent more than 2 years and graduated from an overseas university or postgraduate course.
- (3) Have spent more than 6 academic years since they turn 6 years of age
- (4) Have spent more than 2 years and graduated from an international school in Japan.



Overview of the General Entrance Exam

3. Enrollment Capacity, Exam Date and Venue

Enrollment capacity:105

(45 students are chosen as **medical scholarship students**)

Application Period From 21st Dec. 2021 to 7th Jan. 2022

Exam date

1st phase 19th Jan. 2022

2nd phase One day between 26th Jan. 2022 and 31st Jan. 2022

Venue

1st phase Narita, Tokyo, Osaka, Fukuoka

※The venue at Tokyo is Gotanda TOC building, but we may use the Tokyo Akasaka campus if its capacity is exceeded.

2nd phase Narita, Tokyo



Overview of the General Entrance Exam

4. Subjects / Exam Length / Allotments

1st phase

English 80 min • 200 score

Math 80 min • 150 score

Science (Select two subjects from Physics, Chemistry, Biology)
80 min • 100 score × 2

Essay 60 min • Graded evaluation

2nd phase

Individual interviews 30 min × 2 • Graded evaluation

* If you prefer, you can take interviews in English.



Overview of the Exam using Common Test for University Admission

5. Enrollment Capacity, Exam Date and Venue

Enrollment capacity: 15

(5 students are chosen as **medical scholarship students**)

Application Period From 21st Dec. 2021 to 7th Feb. 2022

Exam Date

1st phase Common Test for University Admission
15th and 16th Jan. 2022

2nd phase (Written exam) 18th Feb. 2022

2nd phase (Individual Interview) 22nd Feb. 2022

Venue for 2nd phase Narita, Tokyo



Overview of the Exam using Common Test for University Admission

6. Subjects / Exam length / Allotments

1st phase (Results of Common Test for University Admission)

Japanese (Incl. Classic) 200 score

Math (Math I A、Math II B) 100 score ×2

English (Incl. Listening) 200 score

Science 100 score ×2

(Select two subjects from Physics, Chemistry, Biology)

Geography, History and Social sciences 100 score

(Select one subject from Geography B, World History B, Japanese History B, Ethics/Politics/Economics)

2nd phase * Those who take the general entrance exam are exempted from some subjects

Written exam (English) 60 min · 100 score

Essay 60 min · 600 characters · Graded evaluation

Individual interviews 30 min × 2 · Graded evaluation



School of Medicine, IUHW

Tuition fee and Scholarship program



Reference: Tuition fees of Medical schools in 2021

(in units of 10,000JPY)

+ Be able to live in the dorm (55,000 JPY per month including breakfast & dinner)

IUHW [Special Scholarship Student]

300

National University

350

IUHW

1,850

Under 20 million JPY

Average among private universities

3,170

0

500

1,000

1,500

2,000

2,500

3,000

3,500



国際医療福祉大学

Special Medical Scholarship Program

- General Entrance Exam **45**
- Exam using Common Test for University Admission **5**
- Special Entrance Exam **A few students**
(International Student/Returnee & Student from International School)

In addition to the scholarship (total 14 million JPY), the admission fee of 1.5 million JPY is returned after the enrollment.

A total tuition fees for 6 years is set 3 million JPY.

* Payment amount 🖐 1st year 2.5 million JPY



From 2nd year 2.3 million JPY per year

- * You can study for less than the tuition fee (approx. 3.5 million JPY) of the national university.
- * If you wish, you can live in the dorm.



Half Scholarship Program for International Student

IUHW Half Scholarship is granted to international students who pass the “Special Entrance Exam” with excellent exam scores.

©Half amount of the admission fee and academic fee for 6 years

Notes

- The scholarship is transferred to the admission and academic fees.
- After graduation, you must work at designated hospital for 6 years as the duty period.
- ✕ In addition to the above condition, you are not allowed to have a part time job and must live in the dorm.
- ✕ If you do not like to be bound by any conditions such as the duty period and others, you can decline the offer of IUHW Half Scholarship.



In the end...



Our medical school offers the latest curriculum developing from scratch on the new concept of medical education.

We look forward to welcoming you to our medical school and hope that you will become **a physician who can play an active role on the global stage.**

